



# NGDV – Technical Bulletin

**Title:** Spark Plugs

**Number:** NGDVTB0011

**Revision:** -

**Classification:** Highly Restricted

Exceeding Customer Expectations through Continuous Improvement



# NGDV Technical Bulletin

## Spark Plugs

### Table of Contents

**INTRODUCTION** ..... 2

    Initial Concern ..... 2

    Suspect Population ..... 2

    Parts ..... 3

    Tools ..... 3

    Personnel Requirements ..... 3

**PROCEDURE** ..... 3

    Contact Information ..... 5

## NGDVTB011 – SPARK PLUGS

# INTRODUCTION

## Initial Concern

NGDVs may exhibit an engine misfire condition with diagnostic trouble codes (DTC) P0301, P0302, P0303 and/or P0304 set in the powertrain control module (PCM), resulting in melted or damaged spark plugs and possible cylinder wall damage.

## Suspect Population

The cut-in date of the new spark plugs is June 8, 2025. Any engines with a serial number showing a Julian Date prior to June 8, 2025, would be part of the suspect population.

To find the Julian Date within the engine serial number:

EF03A25143213017

- The highlighted digits are the date
  - 25 = The year (2025)
  - 143 = May 23rd (143<sup>rd</sup> day of the calendar year)

Julian date for June 8, 2025, would be (25159)

Engine Serial numbers can be found on the front of the engine, near the accessory drive area (belts & pulleys). The engine below was built on the 27<sup>th</sup> day of 2026 or January 27<sup>th</sup>, 2026.



**NGDVTB011 – SPARK PLUGS**

---

## **REWORK TOOLS AND MATERIAL LIST**

### **Parts**

- Spark Plug JYSP-12Y-PTX (as needed)

### **Tools**

- Borescope

### **Personnel Requirements**

- Inspection: 0.10 Total Man Hours (5 minutes)
- Repair: .2 Total Man Hours (15 minutes)
- 1 person will be required for this job.

## **PROCEDURE**

1. If your vehicle is showing DTC's - P0301, P0302, P0303 and/or P0304 set in the powertrain control module (PCM) then remove and inspect the condition of all spark plugs. See page 3-119 in the NGDV Service Manual for instructions on removing and installing spark plugs.
2. If the spark plugs are damaged or melted, replace them with the new spark plug(s) (JYSP-12Y-PTX). See page 3-119 in the NGDV Service Manual for instructions on removing and installing spark plugs.



3. Use a borescope to inspect the condition of the affected pistons and cylinder walls. Refer to Figure 1 for an example of normal cylinder wall wear and Figure 2 for an example of damaged cylinder walls.
4. If the cylinder walls are damaged, please contact your service supervisor for further support.

**NGDVTB011 – SPARK PLUGS**

---

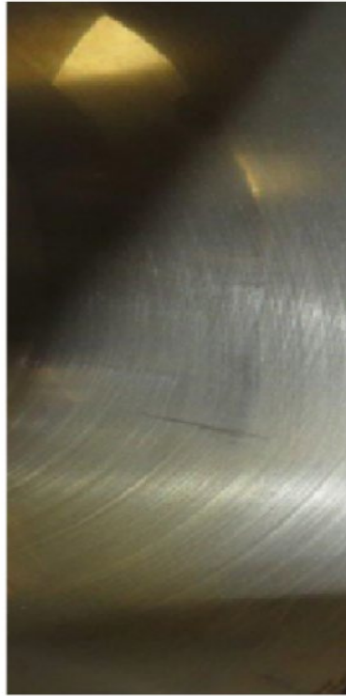


Figure 1 – Normal Cylinder Wall Wear



Figure 2- Damaged Cylinder Wall



**NGDVTB011 – SPARK PLUGS**

---

Revision	Date	Description	Requestor

**Contact Information**

NGDV Product Support Line - 1 (800) 830-3554