



NGDV – Technical Bulletin

Title: Oshkosh Diagnostic Tool (OKDT) Release 04/08/2026	
Number: NGDVTB015	Revision: A
Classification: Highly Restricted	

Exceeding Customer Expectations through Continuous Improvement



NGDV Technical Bulletin

Oshkosh Diagnostic Tool (OKDT) Release Note

Table of Contents

INTRODUCTION	2
Initial Concern.....	2
Suspect Population.....	2
Procedure and Material List.....	2
Frequently Asked Questions.....	2
Tools.....	2
Consumables.....	2
Personnel Requirements.....	2
PROCEDURE	3
VCI Selection User Interface Change (User Action Required).....	3
Text Updates to Test Precondition and Post Condition Screens - (Information only – No User Action Required).....	4
Addition of DCDC Voltage Datalogger Data Identifier (DID) - (Information only – No User Action Required).....	5
Correction to the ABS_ESP datalogger DIDs for WSS_RL and WSS_FL - (Information only – No User Action Required).....	5
Contact Information.....	6



INTRODUCTION

Initial Concern

A new version of the Oshkosh Diagnostic tool, 2.6.0, will be released on Wednesday, April 8, 2026. This will contain new and modified functionality. This bulletin is to make users aware of these changes and new functionality.

Suspect Population

All ICE and BEV NGDV's

Procedure and Material List

See process outlined below.

Frequently Asked Questions

Q: What are the major changes associated with this release?

A: There are several changes to the OKDT 2.6.0 release that will be noticed by the user.

- VCI Selection User Interface change
- Text updates to test precondition and post condition screens
- Addition of DCDC voltage datalogger data identifier (DID)
- Correction to the APS_ESP data identifier WSS_RL and WSS_FL parameter reads

REWORK TOOLS AND MATERIAL LIST

Tools

- No tools required

Consumables

- No consumables required

Personnel Requirements

- None

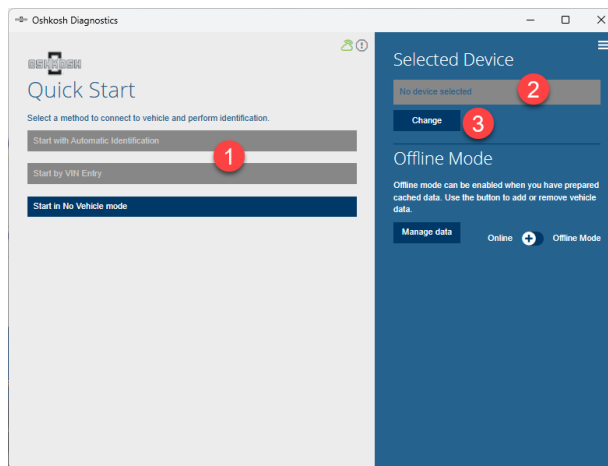
PROCEDURE

Changes to Oshkosh Diagnostic Tool Version 2.6.0

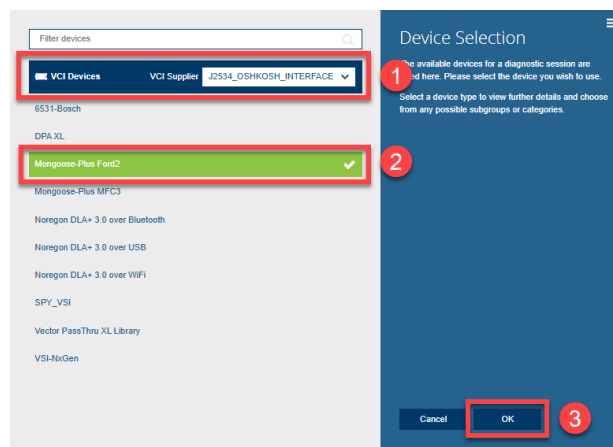
VCI Selection User Interface Change (User Action Required)

The VCI user interface change will require all users to re-select their VCI from the menu. This is a one time selection only. Users will see the Start with Automatic Identification and Start by VIN Entry (1) and No device selected (2) options greyed out on the Quick Start menu.

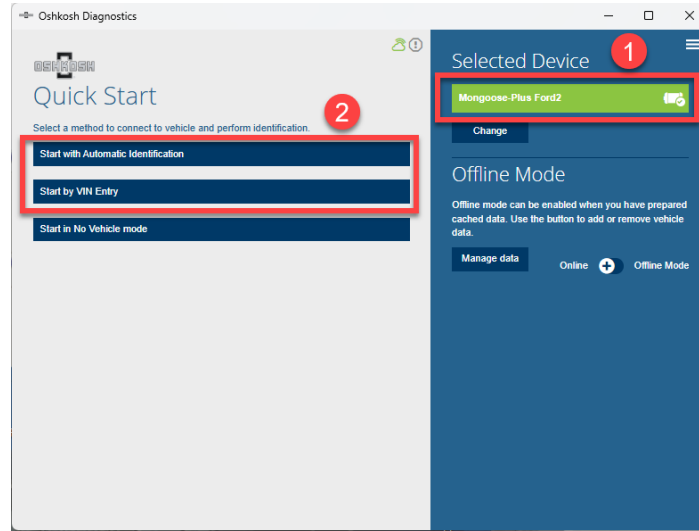
User will need to select the Change (3) button in order to reselect their VCI.



On the device selection screen, verify the J2534_OSHKOSH_INTERFACE is selected as the VCI Supplier (1), select your specific VCI from the options available (2), then select OK.



On the next screen the user will see the selected VCI under the Selected Device (1) and Start with Automatic Identification and Start by VIN Entry (2) are now available selections and the user can launch OKDT as normal. This

NGDVTB015 – OSHKOSH DIAGNOSTIC TOOL (OKDT) RELEASE 04/08/2026**Text Updates to Test Precondition and Post Condition Screens - (Information only – No User Action Required)**

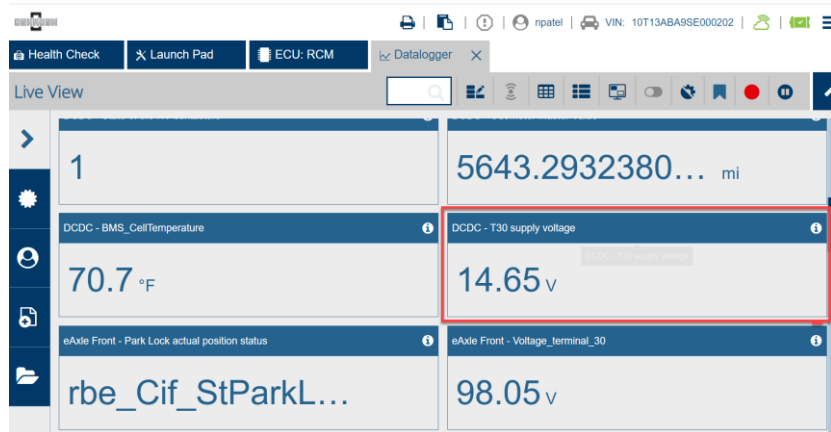
Minor text modifications have been made to several of the test screens due to updated module software functionality changes.

1. RCM Pre & Post ECU Reprogramming/Replacement Screens
 - a. Remove the requirement to remove the cut loop on the BEV precondition screen
 - b. Remove the most all of the post conditions and clarified the requirement for running the RCM Exit Plant Mode special function after RCM Reprogramming
2. Updated ABS Service Bleed text to provide clarification for when to press and release the brake pedal during the bleed process for each caliper.

NGDVTB015 – OSHKOSH DIAGNOSTIC TOOL (OKDT) RELEASE 04/08/2026

Addition of DCDC Voltage Datalogger Data Identifier (DID) - (Information only – No User Action Required)

DCDC supply voltage DID has been added to the Datalogger → BEV list



Correction to the ABS_ESP datalogger DIDs for WSS_RL and WSS_FL - (Information only – No User Action Required)

In previous versions of OKDT the WSS_RL and WSS_FL DIDs were reversed in datalogger so that Rear Left was reading the Front Left values and Front Left was reading the Rear Left values. These have been updated to read the correct values RL (1) and FL (2).





NGDVTB015 – OSHKOSH DIAGNOSTIC TOOL (OKDT) RELEASE 04/08/2026

Revision	Date	Description	Requestor

Contact Information

NGDV Product Support Line - 1 (800) 830-3554